

Nexus Enterprises, is a known name as a service provider in the domain of Spine & Neurosurgery. Established in 2018, with sole aim to be a leading service provider for surgeon needs in the field of Neuro & Spine surgery.

With systematic collaboration with Imported & Indian manufacturers, Nexus has a strong portfolio of products.

With a strong legacy of experience & undying passion, Nexus aspires for greater frontiers.



PRODUCT BROCHURE



SECURE - C

ARTIFICIAL CERVICAL DISC

- Mean ROM - 9.1° & 1.1mm translation.
- US FDA approved
- Core has spherical & cylindrical design to mimic actual disc ROM.

ASSURE - Cervical Plate

- Low profile plate
- One step locking mechanism

COALITION

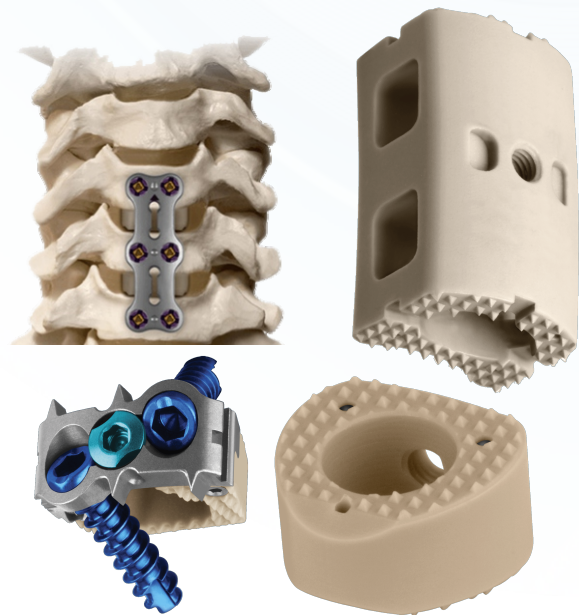
- Anatomical Design Cage
- Multiple options of sizes to suit all anatomies.

SUSTAIN - ACDF Cage

- Teardrop footprint
- Broad range of size to accommodate all anatomies

NIKO - Cage

- Peek spacer for corpectomy



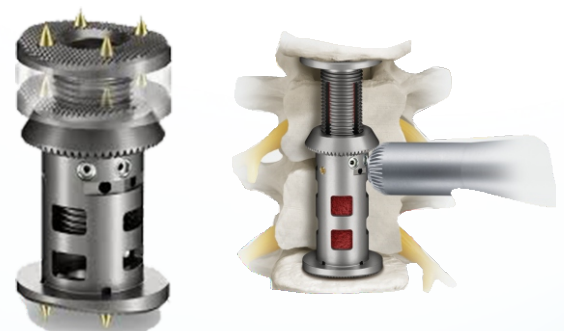
ELLIPSE - Lateral Mass Solution

- Comprehensive occipito - cervical fusion solution
- Non threaded locking
- Novel instrument Design



XPAND - Corpectomy Spacer

- Available for cervical & thoraco - lumbar footprints
- Lordotic / kyphotic angles to match varying patient anatomy
- Non - ratcheting expansion - allowing continuous adjustability
- Large open canal for bone graft



TRANSITION - Dynamic Stabilisation System

- Has Unique combination of compressible bumper & flexible bumper with central cord, provides dynamic stabilisation to spine,



CREO - MIS Stabilisation System

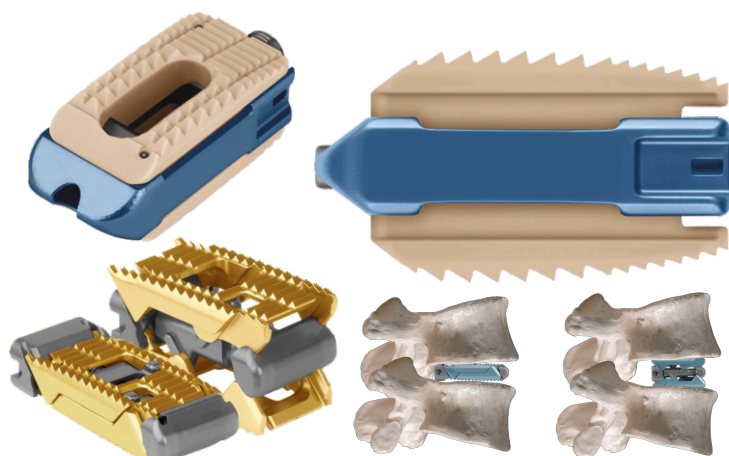
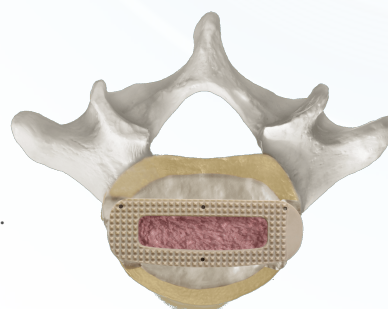
- Novel & pioneering - modular built in screw & extended head system
- Low profile 13mm dia of extended head.
- Novel & seamless instrumentation designed for surgeon comfort & anatomical needs.

REVOLVE - MIS Stabilisation System

- Strong screw - sleeve connection
- Designed to address multi - level cases
- Streamlined rod reduction technique.
- Non - threaded locking caps.

TRANSCONTINENTAL

- Lateral interbody spacer.
- Available as 4° coronal tapered angle.



CALIBER

- Interbody expandable cage - peek.
- Expansion upto - 5mm

RISE

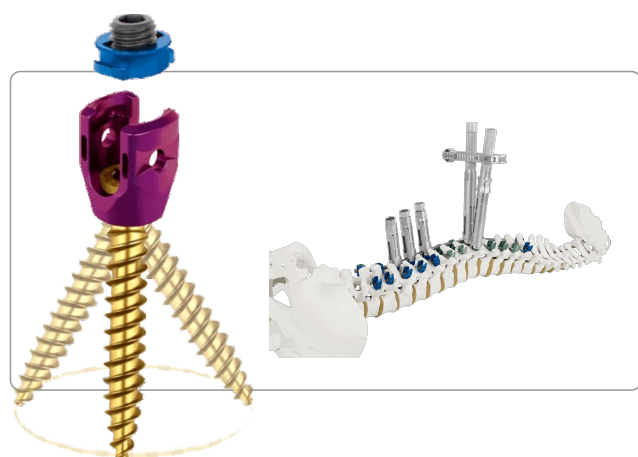
- Interbody expandable cage - Titanium
- Expansion upto - 7mm

SUSTAIN - Oblique

- Narrow Interbody peek cage
- Tapered leading edge for ease of insertion
- Directional teeth for rigid anchoring

SUSTAIN - Arch

- Unique design to cover maximum cortical footprint
- Improved instrumentation.



REVERE / REVERE 4.5

- Globally preferred pedicle screw system
- Unique shaft design to enable parallel distraction.
- Exhaustive instrumentation - allows complete control & manoeuvrability in deformity cases.



MJ Surgical is India's leading manufacturer of ortho & spine implants. Established in 1998 MJ Surgical has been able to create its name as a trusted brand by health care experts. MJ Surgical implants are now sold in many countries overseas.

MJ SURGICAL SINGLELOCK

Single lock screw are available in complete range of mono, poly, reduction, dual thread and Iliac screws.

Seamless & ergonomic instrumentation allows ease to surgeon in any kind of procedures.



MJ SURGICAL INTER BODY CAGES

MJ Surgical inter body cages have a unique design to facilitate cage insertion and have a large graft window. Peek cages are provided with radiopaque markers.



MJ SURGICAL DELTA II MIS

With Delta II MIS system multiple level fixation can be addressed. The tulip length being 120 mm is of particular advantage in obese patients.

DELTA-FEN

For fixation in osteoporotic bone density, the DELTA FEN provides twin advantage.

- (a) High pitch thread design for formidable pedicle anchoring
- (b) Distal fenestration, to pass cement



MJ CERVICAL PLATE - STATELY

Low profile pre lordosed plate, variable angle bone screw placement, self drilling.

MERIT - POSTERIOR LATERAL MASS CERVICAL SYSTEM

3.5 and 4.0 screw option.

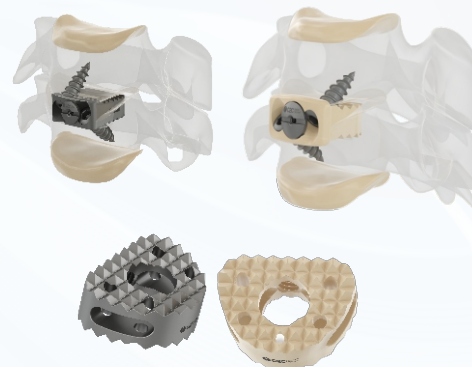
Partially threaded (smooth shank for C1 fixation) available. Reduction lateral mass screws option also available.



2M-ANTERIOR CERVICAL SYSTEM

Zero profile cage with screw option available in both Peek and Ti.

Anterior posterior distance 13mm appropriate for small stature patients. Self drilling bone screws.



X-PAN

Cervical expandable corpectomy cage. Anatomically contoured plate. Smooth in-situ distraction.

X-PAN PRO

Thoraco - Lumbar expandable corpectomy cages. Spike anchors provided for good end plate hold.



HA COATED SCREW

Specially designed HA screws are available especially for osteoporotic fixation.

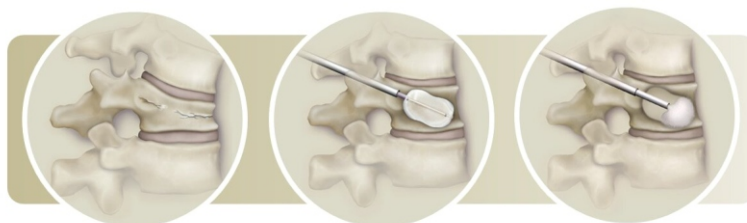
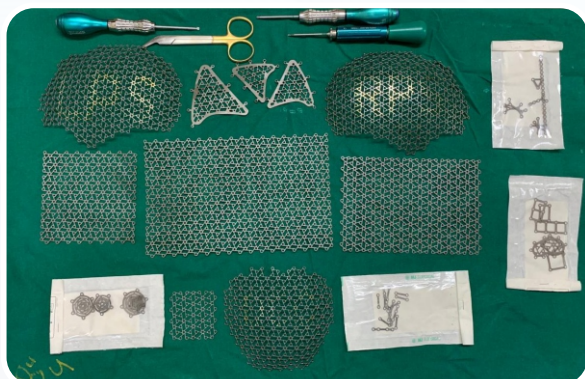


ECO CAGE

Mesh cage in all diameter and length.

BALLOON KYPHOPLASTY SYSTEM

Full Balloon kyphoplasty system is available.



MJ NEUROMAX

Cranial fixation plates and screws are available. Self drilling screws available.

MEDICON

Medicon is an internationally renowned manufacturer of high quality German Standard Instruments.



MEDICON DIEBLAUEN

- Medicon diablauen kerrison rongeurs provides one piece dismantling capability - simple disassembly and assembly with click of a button.
- Ergonomic design & balance, reduced weight & silicone handle provide highest precision & handling comfort.
- Thin foot plate ensures confidence while working in critical areas.

MAGIC NON STICK BIPOLAR FORCEPS

The anti stick coating of 'Magic' bipolar forceps assures effective coagulation by avoiding the tips sticking together. non charring tips.

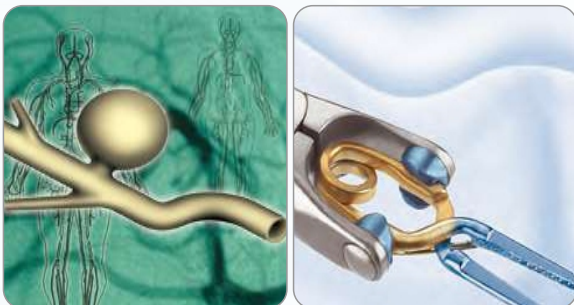


RETRACTORS / MICRO INSTRUMENTS

Precision micro scissors, micro forceps, micro needle holders with diamond dust.



CRANIAL FIXATION MICRO SCREW & PLATES



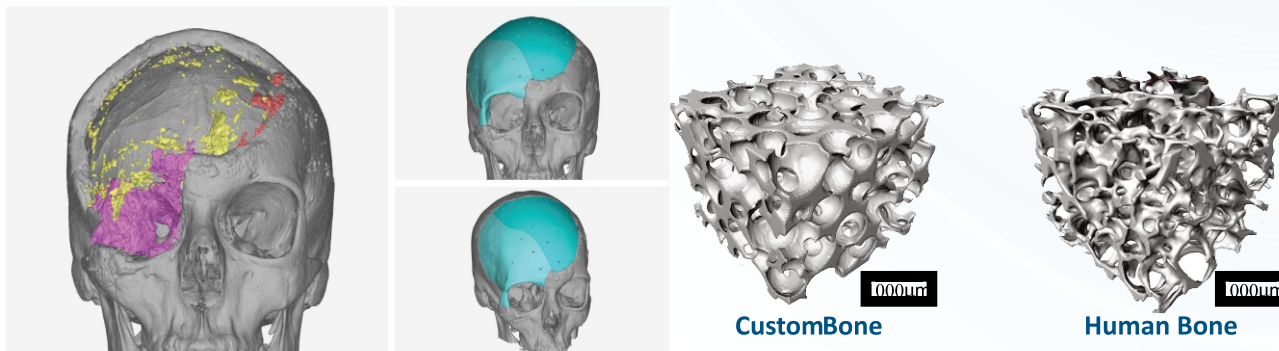
YASARGIL ANEURYSM CLIPS

Wide array of permanent & temporary aneurysm clips.

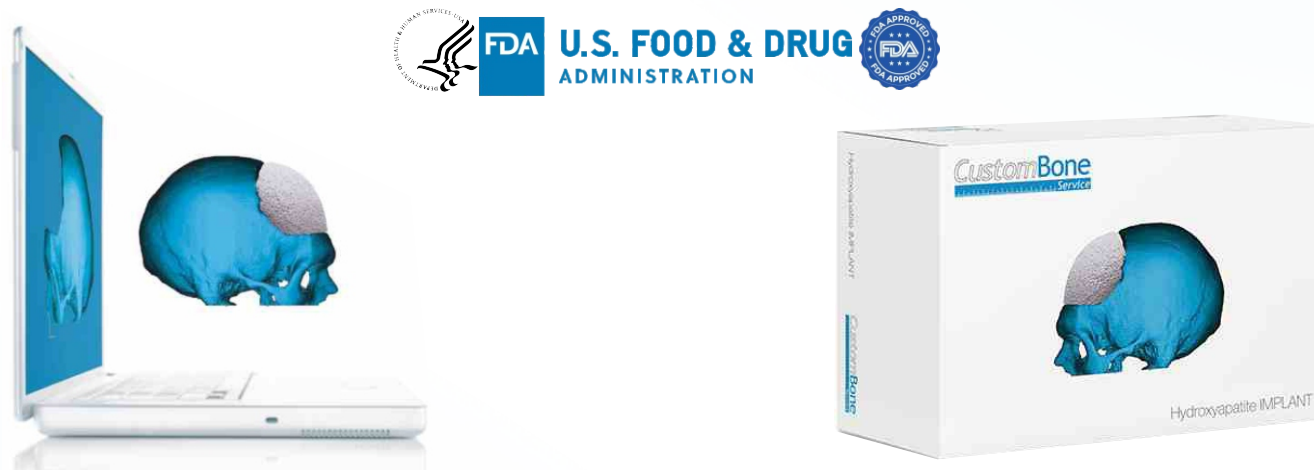
Clip applicators are provided with the set. The clips on mounting have a disatal swivel to allow access in remote anatomical location.

CustomBone Service

Biomimetic Cranial Reconstruction

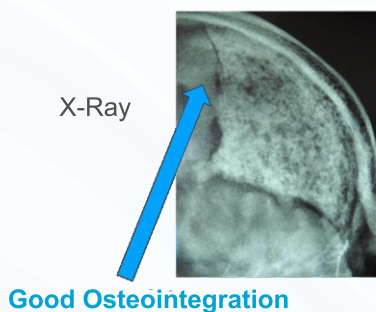


3D CERAMIC HYDROXYAPATITE (100% HA)

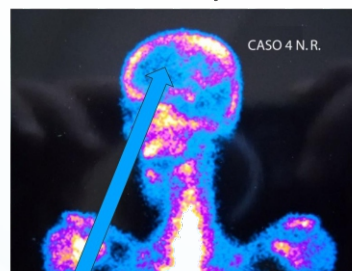


Customised by Surgeon, Fabricated in ITALY

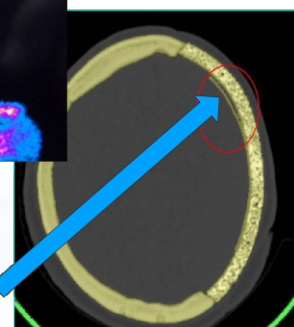
OSTEO INTEGRATION EVIDENCE AFTER 6 MONTHS POST OP



SPECT Analysis

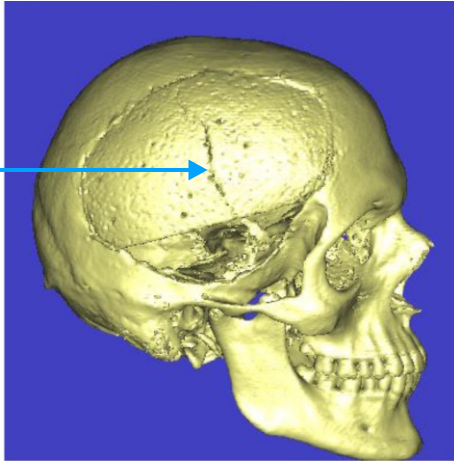


CT Scan

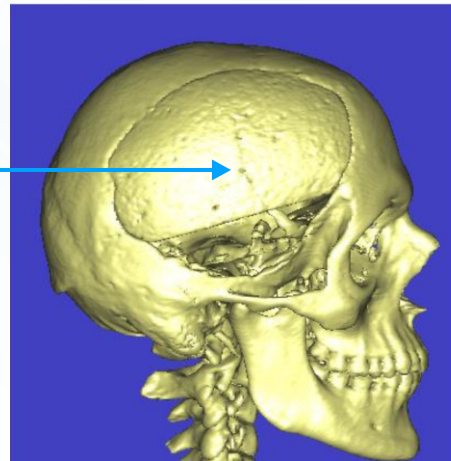


"Osteointegration in Cranial Bone Reconstruction: A goal achieve". .S. Spiro, M. Fricia, G. Maddalena, A Nataloni, A Tampieri: Journal of Applied Biomaterials & Functional Materials (2016)

CUSTOM BONE SELF REPAIR EVIDENCE



**12 Months post Op a
2nd Trauma Occurred**

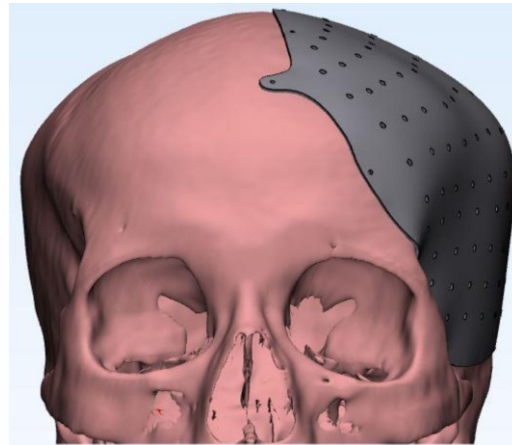
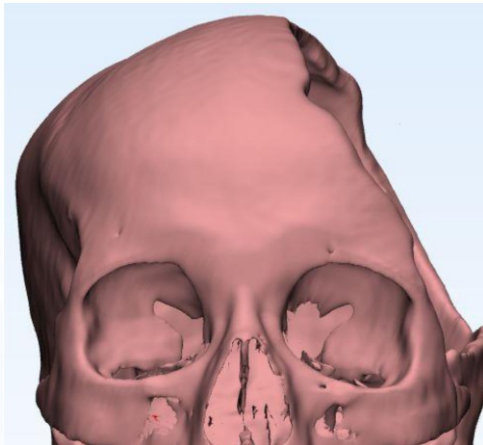


**7 Months after
2nd Trauma**



12 months post Op a 2nd Trauma Occurred 7 Months after 2^d Trauma“ Staffa-Custom made bioceramic Implant in complex and large cranial reconstruction. A 2 year follow up”
G. Staffa, A. Barnbanera, A. Faiola, M. Fricia, P. Limoni, R. Mottaran, B. Zanotti, R. Stefini, J. Cranio Maxillo Facial Surgery.

PATIENT SPECIFIC IMPLANT - CRANIOPLASTY



HYDROCEPHALUS THERAPY

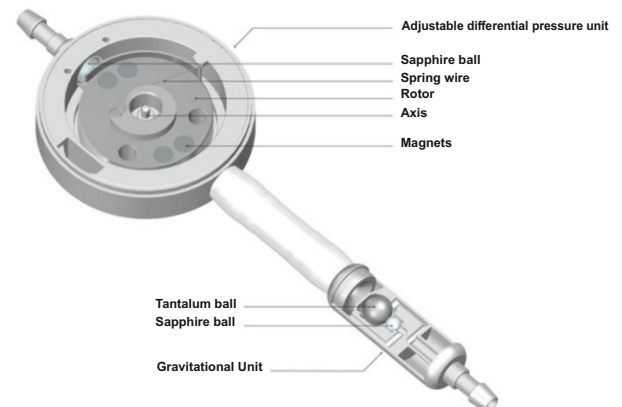
proGAV® 2.0 - Programmable Shunt

Your simple choice for precise patient care : VP Shunts

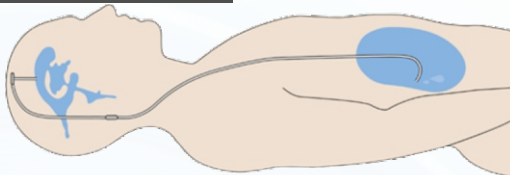


Aesculap Neurosurgery

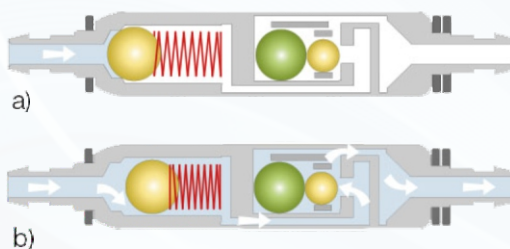
- Wide adjustment range from 0 to 40 cmH₂O
- 3 Tesla MRI conditional
- Effective treatment against overdrainage



GAV® 2.0 with Gravitational Valve



Combination of Differential pressure Unit & Gravitational Unit Ensures Automatic Opening pressure Depending on Patient Positioning

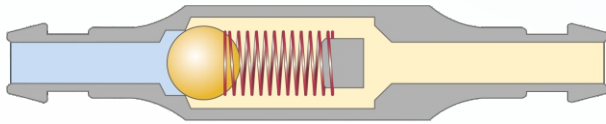


HYDROCEPHALUS THERAPY

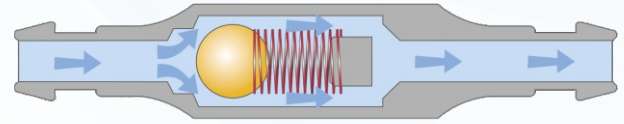
miniNAV®

The Valve

The miniNAV® is the world's smallest differential pressure valve with reliable drainage control for hydrocephalus therapy. With its special design and slimline shell it is the ideal valve for the treatment of premature and newborn infants.



miniNAV closed



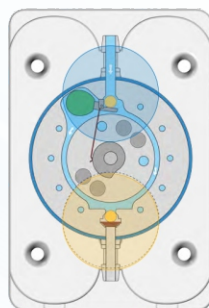
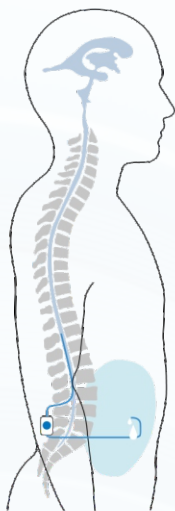
miniNAV open

XABO®

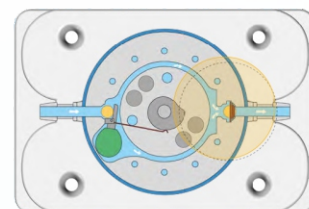
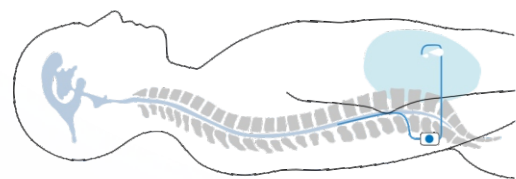
ANTIBIOTIC IMPREGNATED CATHETERS
XTRA PROTECTION AGAINST INFECTION



LUMBOPERITONEAL SHUNTS



Gravitational unit and differential pressure unit work together when the patient is standing



Only the differential pressure unit is active when the patient is supine

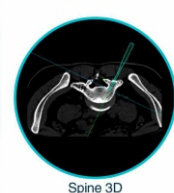
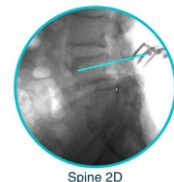
INTRASPINE

- Dynamic Interlaminar Device
- Motion Preservation
- Mini Invasive Surgery
- Fast & Easy Procedure

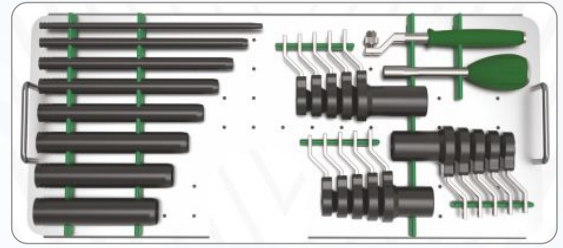


B DYN

- Spinal Dynamic Posterior Stabilization Device
- Motion Preservation & Instability Control
- Mechanical Stresses Absorption
- Combination of Dynamic & Fusion Solution



TUBULAR MIS RETRACTOR WITH LIGHT SOURCE.



SPINE BURR

- Spine burr provided on rental option.
- Cutting & diamond tips available.



SUMIRAN SCALP CLIPS

Distinct colour clips with uniform tension & wide opening allows ease to surgeon.



NEXUS ACADEMY

NEXUS DEFORMITY WORKSHOP - Maxi Board

- A unique 3D deformity workshop board
- Unique training tool for young surgeons to understand various maneuvers of rotation / de rotation



MAXY PEREIRA
9930445523

DRIVESH PANDEY
9819714490